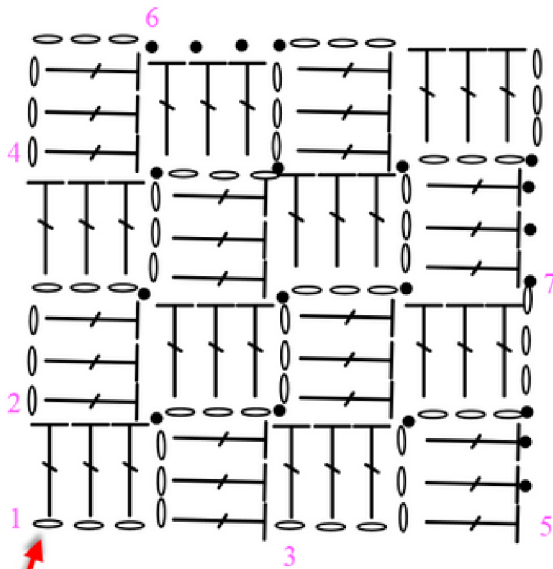




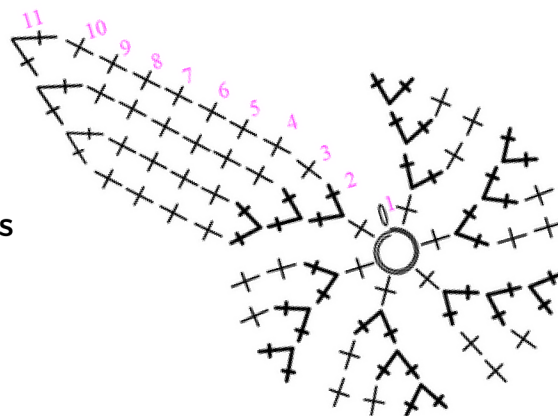
# TECHNIQUE: CHARTS



Start here

## Sphere / Ball

This demonstrates what the increases and decreases look like when crocheting a ball shape.



## Legend

	ch		dc
	slst		sc2tog
	sc		2 sc inc

## Corner-to-Corner (C2C) Stitch

This technique is great for working on square or rectangular projects (from dishcloths to blankets).

It can be a bit confusing to figure out from a written pattern, so a visual chart can be really helpful.

Scan this QR for a dishcloth pattern if you want to try it out:



## Other Stitch Symbols

I discovered [StitchFiddle.com](http://StitchFiddle.com) is a great site for drawing your own charts. They have a full library of stitch symbols. Scan this QR code for more details:

